

❖ Hozhoni Cleaning Crew

9/28/2016

➤ Group 34 :

- Fahad Alaenezi (Web Designer)
- Amber Juare (Secretary/ Document manager)
- Calvin Schnorbus (Client Contact)
- Hussain Alwateeb (Budget Liaison)
- Hasan Aldhefeery (Project Manager)



NORTHERN
ARIZONA
UNIVERSITY



❖ Client's Information :

- Hozhoni Foundation company (ho-sho-nee).
- It's a leading provider of services for people with disabilities.
- Our client is Ms. Charlene Turman from the Hozhoni company.



❖ Project description :



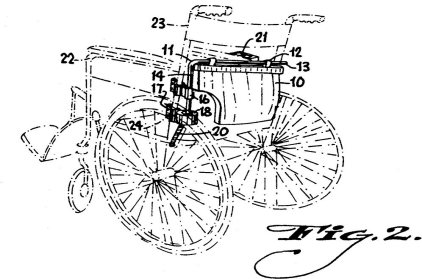
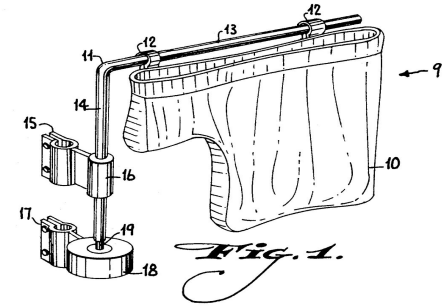
- The product is geared at helping those with disabilities
- The solution must be adaptable for different sizes or types of wheelchairs. Our goal is to create a system(s) that allows wheelchair users or other persons with disabilities to easily and efficiently carry cleaning supplies.



❖ Background/Benchmarking:Movable Storage Pouch [1] :

- Attaches to the back of a wheelchair
- User can rotate pouch
- Easily accessible and lightweight
- Can be made detachable

U.S. Patent Jan. 19, 1993 Sheet 1 of 3 5,180,181



❖ Background/Benchmarking: rolling cart :

- A “cart” can be attached behind the wheelchair
- Adaptable to users not in a wheelchair
- Lightweight
- Ease of mobility



❖ Customer requirements :

- Safe for users
- Low cost
- Adaptable to different applications
- Portable and modular
- Lightweight



◆ House of quality :

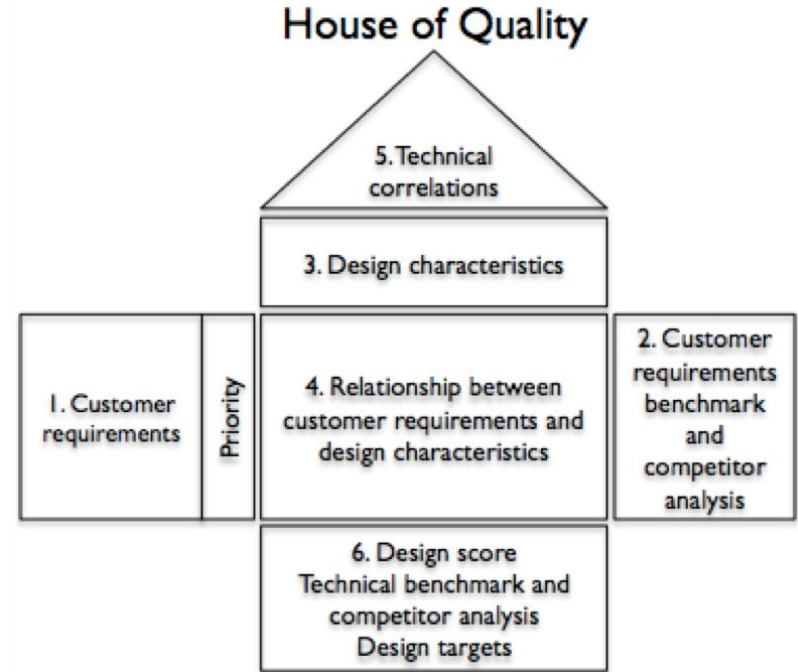
#1) Safe for users

#2) Portable and Modular

#3) Adaptable for different applications

#4) Lightweight

#5) Low cost



❖ Budget :

- The project's budget is \$1,500 funded by Hozhoni to create the system(s)

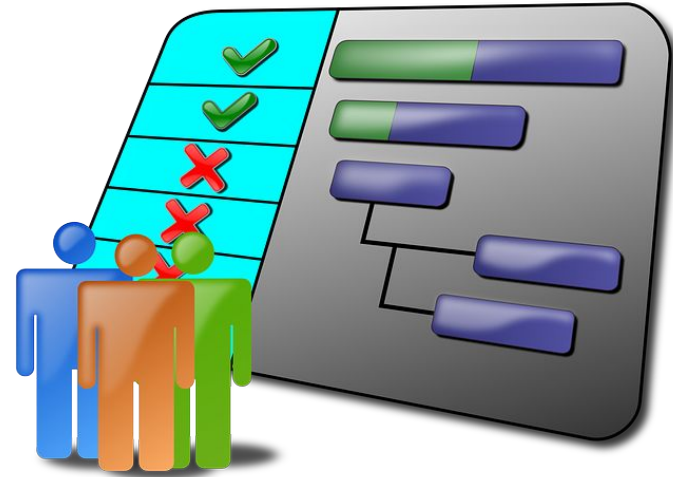
❖ Allocating Costs:

- 10% Prototyping
- 70% building and testing final device.
- 20% advertisement and shipping.



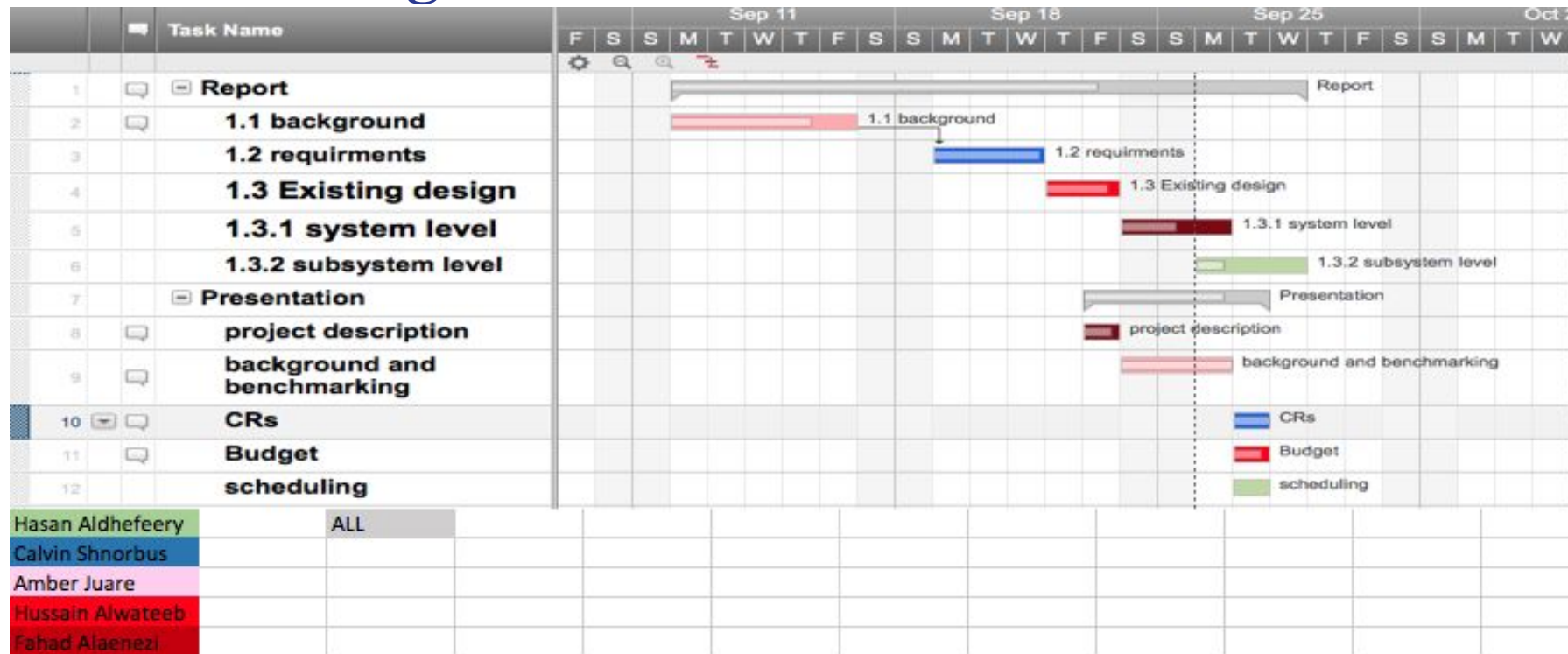
❖ Gantt Chart :

- Manage our time in this project.
- Divide the work equally.
- Serves as a reminder for due dates
- Currently on track



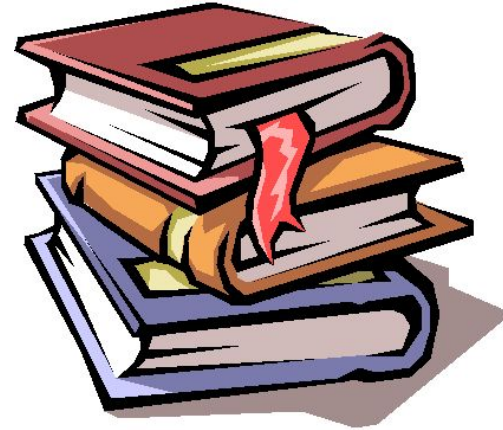


Scheduling :



❖ References :

- [1] Letechipia, Jorge. "Motorized movable storage bag for use on a wheelchair." U.S. Patent No. 5,180,181. 19 Jan. 1993.



Questions?

A black marker is shown drawing a curved line under the word 'Questions?' on a piece of lined paper. The marker is positioned at the bottom right of the word, and the line starts under the 'Q' and ends under the 's'.