

SAE Mini Baja: Frame

Midpoint Review Presentation

Ahmed Alnattar, Neil Gehr, Matthew Legg

NORTHERN
ARIZONA
UNIVERSITY



March 12, 2015



Overview

- Introduction
- Changes Made to the Frame
- Frame Progression
- Updated Schedule
- What still needs to be done
- Conclusion

Introduction

- SAE sponsored 2015 Mini Baja Competition
- Designing a Mini Baja
 - Frame & Body
 - Driver Safety

Changes Made to the Frame

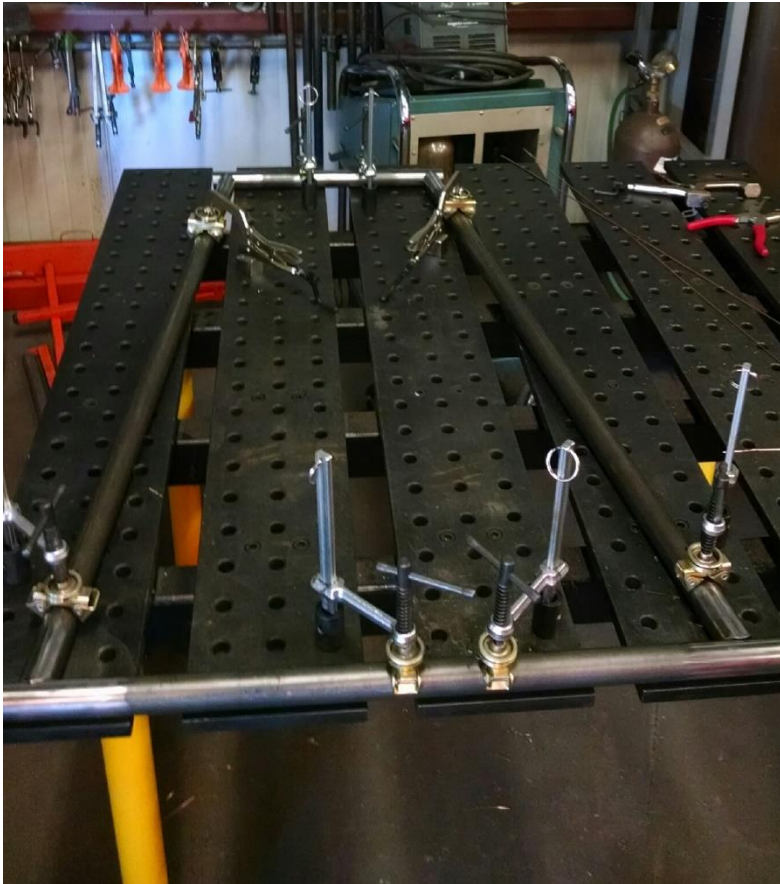
Modified Seat Mount



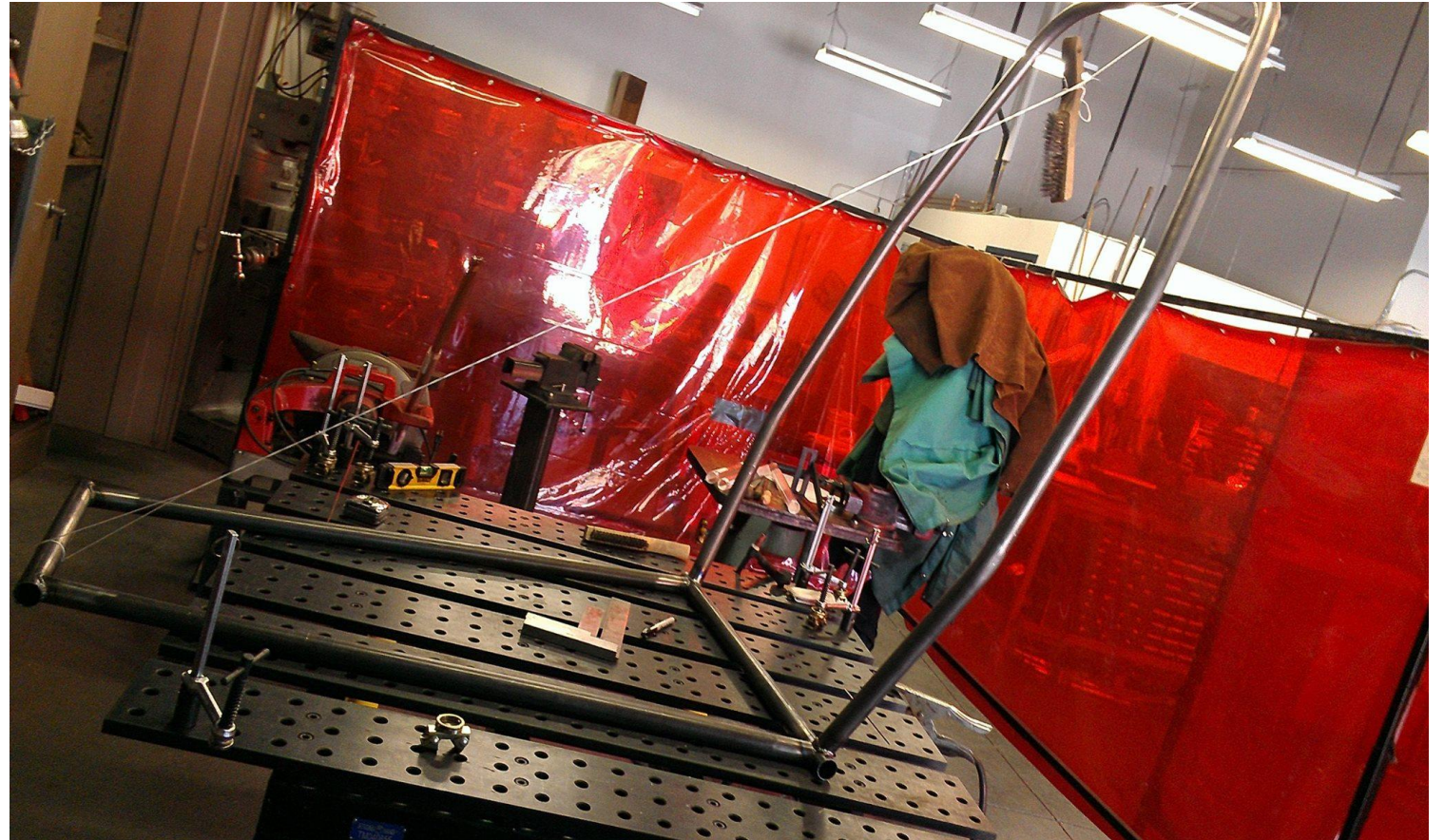
- The seat mount material changed to 1" 1018 steel square tubing with a thickness of 0.065" which is the same thickness as the primary members.

Frame Progression

Feb. 7th

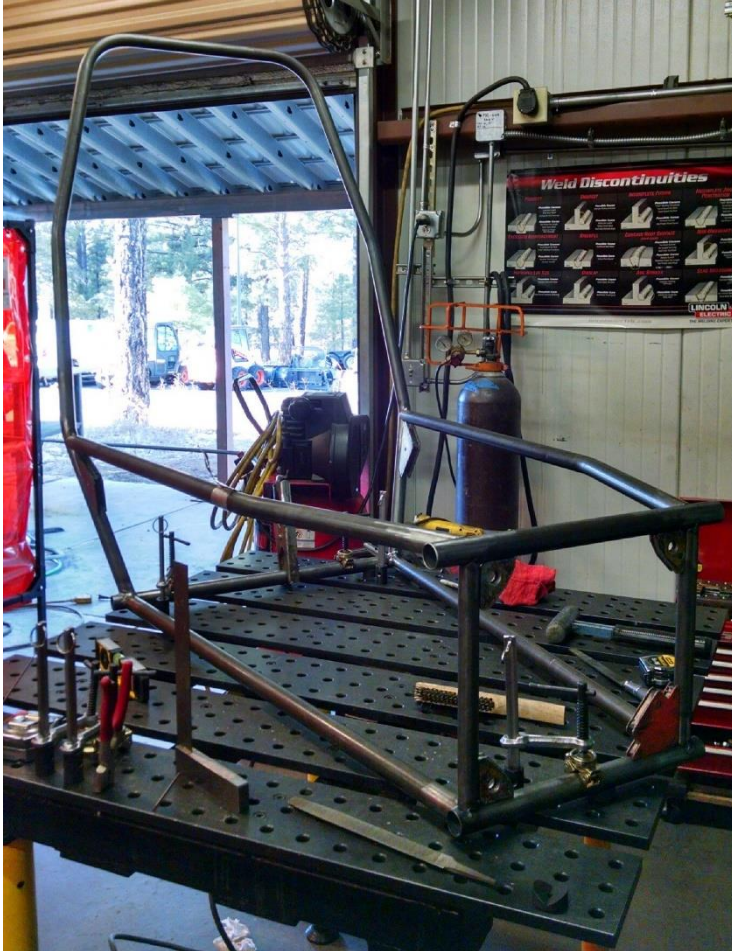


Feb 14th



Frame Progression

Feb 14th



Feb 15th



Frame Progression

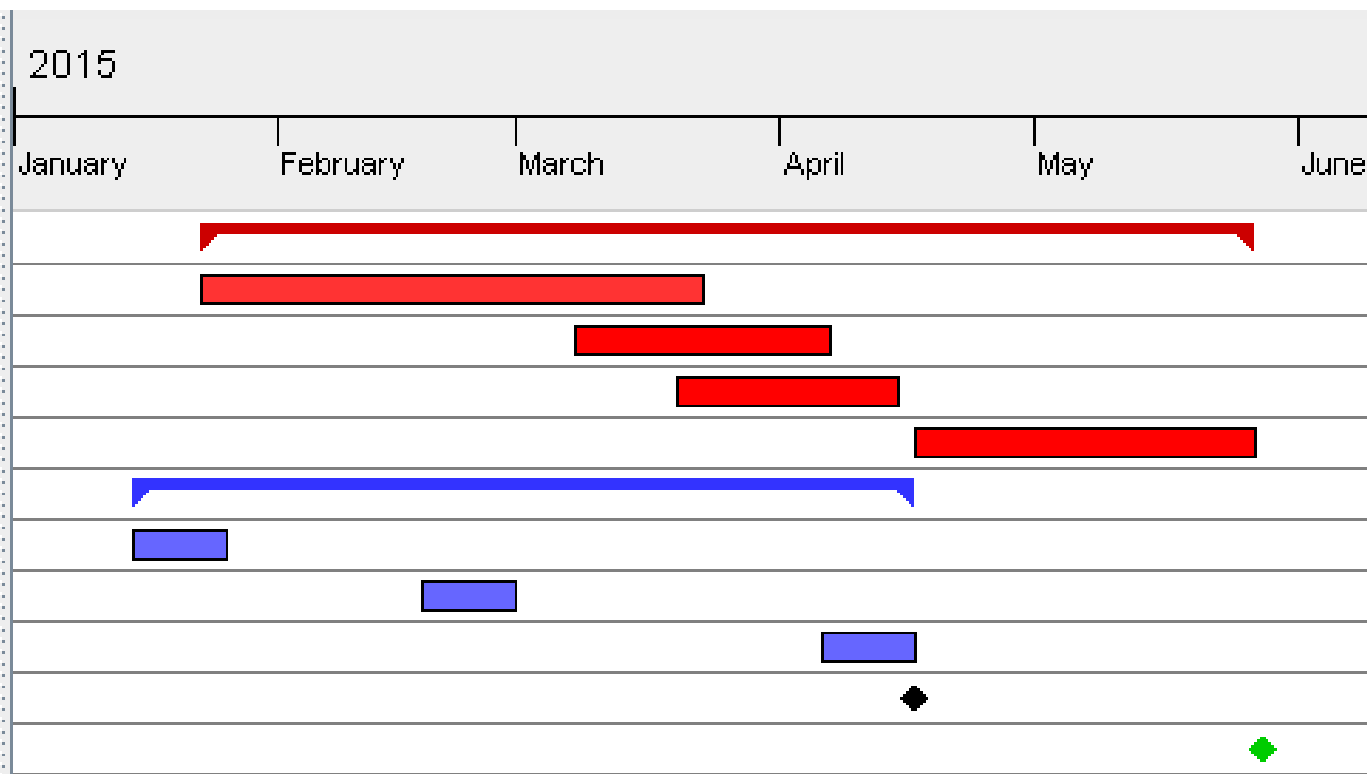
Feb. 21st – 28th



Updated Schedule



Name	Begin date	End date
• Fabrication	1/23/15	5/26/15
• Frame Fabrication	1/23/15	3/22/15
• Seat & Panels	3/8/15	4/6/15
• Components & Assembly	3/20/15	4/14/15
• Testing	4/17/15	5/26/15
• SAE Submissions	1/15/15	4/16/15
• Frame Design Pre-Check	1/15/15	1/25/15
• Cost Report	2/18/15	2/28/15
• Design Report	4/6/15	4/16/15
• Final Report & Poster	4/16/15	4/16/15
• Oregon Competition	5/27/15	5/27/15



What needs to be Ordered

- Material
 - Aluminum sheeting material for firewall and body panels
 - Steel for tabs
- Safety Equipment
 - Motocross Helmet's
 - 5 Point Harness
 - Arm Restraints
 - Fire Extinguisher
 - Tear-off lensed goggles
 - Simpson Neck Collar
 - Fire Retardant Jacket
 - External Kill Switch's

What Needs to be Done

- Fabrication
 - Finish build of the rear end
 - Tabs need to be cut
 - Panels need to be sheared to size
 - Fire wall needs to be installed
 - Seat and belts installed along with support bar
 - All lights and sensors installed

Conclusion

- Changes made to under-seat bracing reduces weight and simplifies mounting
- Finish rear end of frame for component installation
- Order material for tabs and install body panels and fire wall
- Order safety equipment to have enough for at least 2 driver's
- Brake lights and other electrical equipment need to be installed

Questions?